



January 2026

Colorado Jobs and Labor Force Update – November 2025 Update

Authors: Jimena Sanchez, Cole Anderson

In November, Colorado added 2,700 total nonfarm jobs. The state's private sector gained 1,500 jobs, while government employment grew by 1,200 jobs.

Colorado's unemployment rate fell again in November by 0.2 percentage points, reaching 3.9%.ⁱ This is the state's lowest rate since February 2024, when it also stood at 3.9%. Nationally, unemployment rose by 0.2 percentage points in November to 4.6%. The last time there was a difference of 0.7 percentage points in the unemployment rate between Colorado and the U.S. was in October 2022.

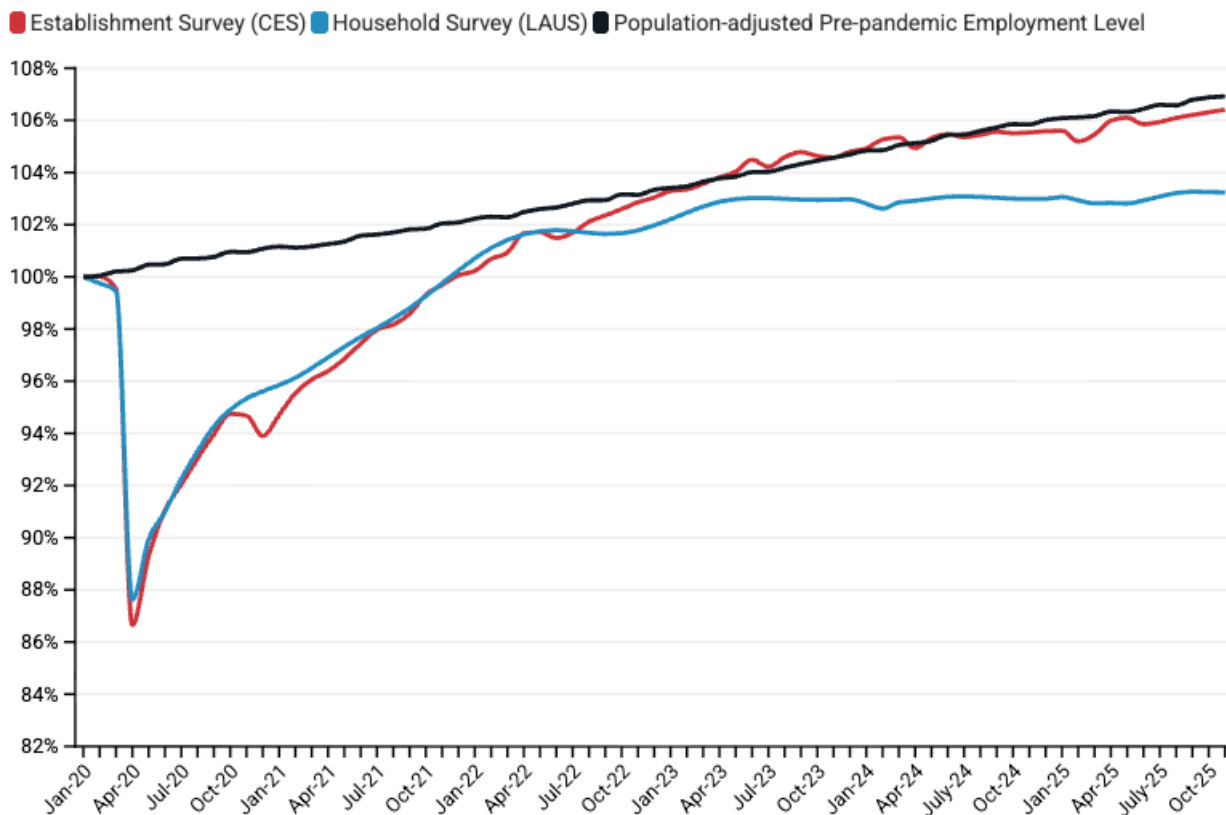
The 1,200 public sector jobs added in Colorado in November came entirely from growth in local and state government. Colorado's local government increased by 400 jobs, while the state government grew by 900 jobs. Federal government employment declined by 100 jobs. The state's professional and business services sector led the private sector in jobs lost in November, with employment in the sector falling by 1,200. The manufacturing sector also saw a decline in employment of 700 jobs, marking the fourth consecutive month of job losses for this sector.

The fastest growing private sector in November was the other services sector, which grew by 1,500 jobs, followed by the education and health services sector, which grew by 800 jobs. Over the past 12 months, Colorado has added 18,300 private sector jobs, compared to 6,300 public sector jobs.

Key Findings—Colorado November 2025 Employment Data

- **Colorado gained 2,700 jobs in November. The state's private sector grew by 1,500 jobs while government employment increased by 1,200.**
- **Over the last 12 months, Colorado's government employment has grown by 6,300 jobs while private employment has increased by 18,300 jobs.**
- **Colorado's unemployment rate was 3.9% in November.** This was a decrease of 0.2 percentage points from September (October data were unavailable due to the 2025 lapse in appropriations).ⁱⁱ **This rate is below the national rate of 4.6%. The 0.7 percentage point gap is the widest since October 2022.**
- **Colorado's labor force participation rate is 67.0%, the lowest it has been since October 2020.** Over the past ten months Colorado's LFPR has decreased by 1 percentage point.
- **Over the past year, federal government employment in Colorado declined by 5,800 jobs while state and local government employment grew by 9,200 and 2,900, respectively.**

Employment Levels in Colorado since January 2020



According to the BLS survey of establishments (CES), Colorado's employment-to-population ratio has not exceeded its pre-pandemic level since June 2024.

Based on the BLS survey of households (LAUS), which captures both traditional jobs and self-employment, **Colorado has never recovered to its pre-pandemic employment-to-population ratio.**

A Deeper Dive into Colorado Industries (BLS CES Survey)

Employers added a net total of 2,700 jobs in November. Private employment increased by 1,500 while public employment increased by 1,200.

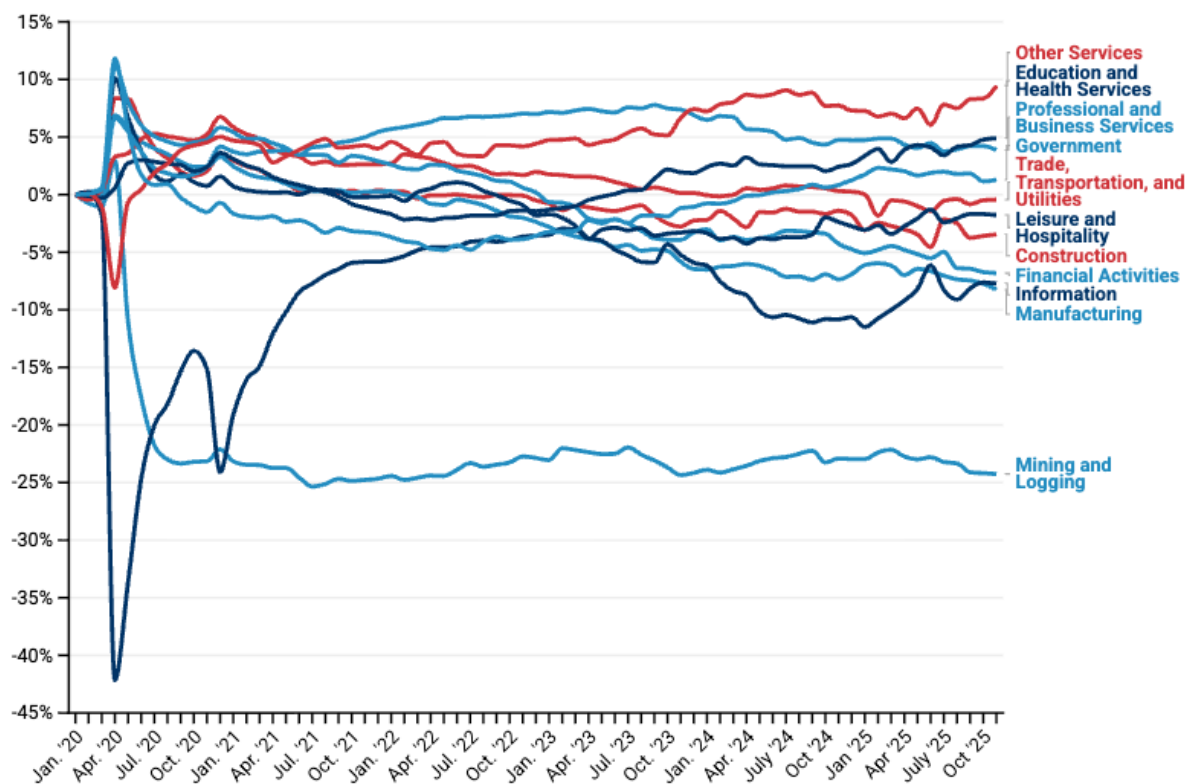
- The construction sector saw an increase of 400 jobs in November.
- The trade, transportation, and utilities sector gained 700 jobs in November.
- Colorado's professional and business services sector lost 1,200 jobs.

- Employment in Colorado's leisure and hospitality sector remained steady in November.
- Employment in the state's mining and logging sector remained steady. This marks its third consecutive month at 21,600 jobs.

The pandemic caused a major shock to the composition of Colorado's job market in early 2020 and may have induced some structural changes in the long run.

- The state's manufacturing sector has seen its share of total employment fall by 8% since the start of 2020.
- Since January 2020, the mining and logging sector has seen its share of state employment fall by over 24%. This is likely the result of a combination of global trends and state policy.

Changing Industry Shares of Total Colorado Employment since January 2020

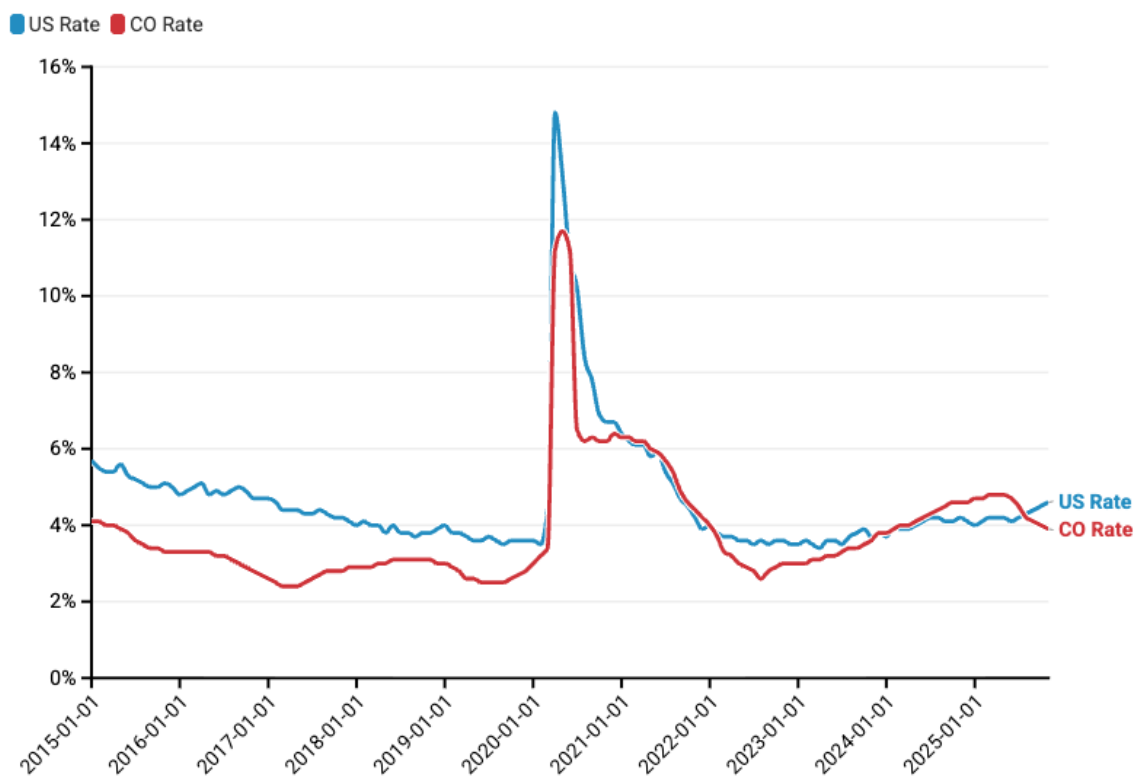


Colorado Unemployment Rate

Colorado's unemployment rate in November was 3.9%, 0.7 percentage points below the national unemployment rate of 4.6%.

Historically, Colorado's unemployment rate has been well below the national average. Between November 2023 and August 2025, it was higher than the national average.

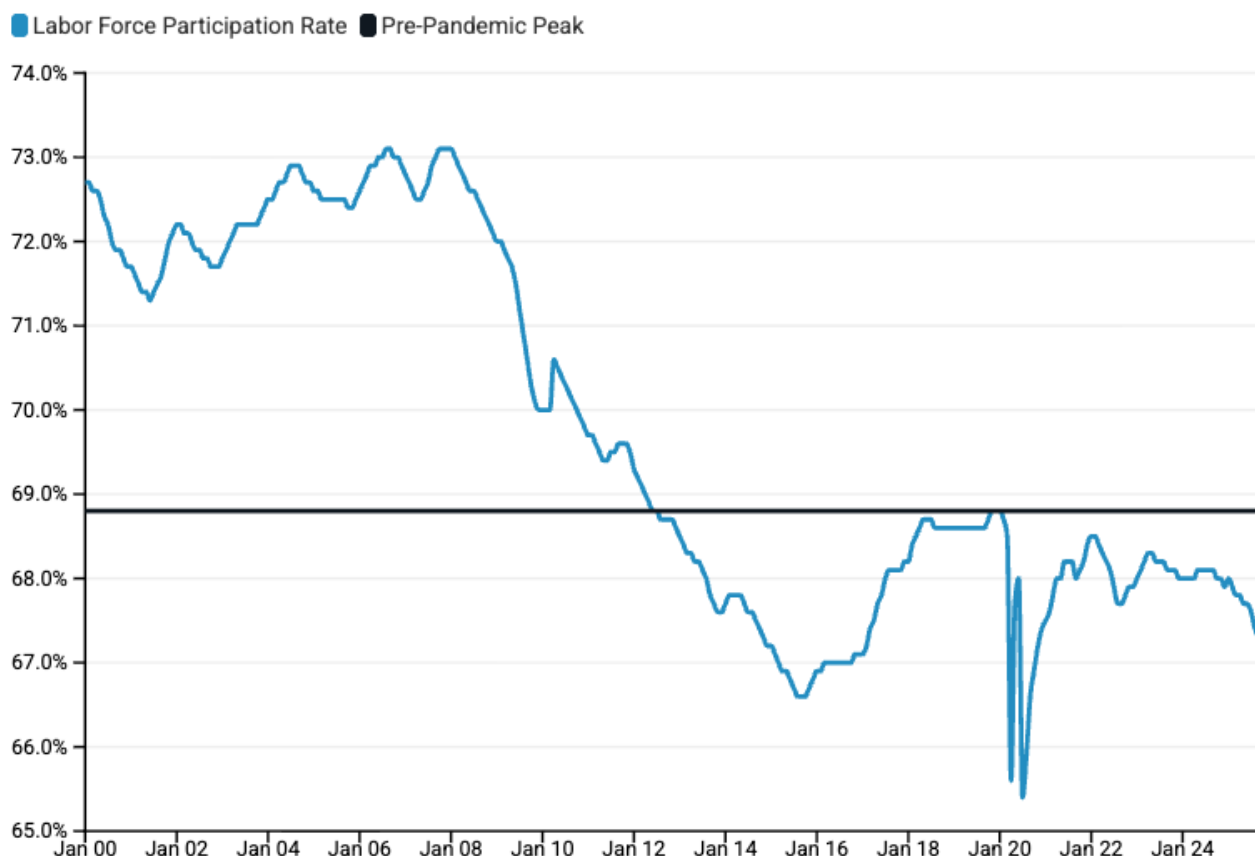
Colorado vs US Unemployment Rate



Colorado Labor Force Update

Colorado's LFPR (labor force participation rate) was 67.0% in November compared to 67.3% in September. The national LFPR for the month of November was 62.5%.ⁱⁱⁱ

Labor Force Participation Rate in Colorado Since 2000



ⁱ This analysis excludes October 2025 data. The BLS has not published data for this month due to the 2025 lapse in appropriations.

ⁱⁱ <https://www.bls.gov/bls/2025-lapse-revised-release-dates.htm>

ⁱⁱⁱ <https://fred.stlouisfed.org/series/CIVPART>